

# COMPANY PROFILE

Aseel constructions

At Aseel Constructions we are putting the satisfaction of the customer to be our priority.

Perfection of the work we have done over the years makes us one of the best companies in Qatar and made our company the first choice, with an experience of 6 years in the side of concrete coring & cutting.



# Table Of Content

[Aseel constructions]

ASEEL CONSTRUCTION SERVICES ..... 4

Quality Policy ..... 9

Health, Safety, & Environmental Policy ..... 12

SAFETY POLICY ..... 13





At Aseel construction Cutting and Coring, total service gives us the edge over our competition. we have served the needs of the concrete drilling and sawing industry since 2016.

From concrete cutting, coring, and drilling everything in between.

We specialize in cutting concrete floors, allowing plumbing pipes to be run in or under slab floor.

We do Cutting and Coring's expertise also includes concrete walls, where we core round holes to facilitate the addition of piping or ventilation, cut window or door openings, and utilize the latest, no-radiation technology – ground penetrating radar (GPR) – to scan inside concrete and detect existing conduits, cables, and pipes prior to drilling and sawing.

Small holes, large holes, many holes or just a few, we have core bits up to and including 42" in diameter and we're capable of drilling to any depth. For maximum efficiency,

In addition to a complete range of core drilling and sawing services, Aseel construction also offers X-ray and the latest in detection technology; ground penetrating radar system that eliminates costly repairs by accurately detecting embedded objects in slabs and walls prior to core drilling and sawing. Best of all, because the ground penetrating radar system emits zero radiation, detection and location can be performed safely; anywhere, anytime; quietly and efficiently.



# OUR SERVICES



# ASEEL CONSTRUCTION SERVICES

## **CONCRETE CORE DRILLING:**

### ***General Information:***

- i. Drilling hole size ( 6mm -800mm ) diameter for any concrete thickness.
- ii. Horizontal, vertical and inclined coring.

### **Field of application:**

1. Penetration up to 600mm diameter in reinforced concrete.
2. Corner holes for wall-sawing.
3. Large diameter coring e.g. manholes and foundations.
4. Deep hole coring.
5. Coring applications in highly reinforced concrete.
6. Penetration for ducts, pipes and cables.
7. Opening for ventilation.
8. Stitch drilling for breaches.
9. Holes for service entries.
10. Wet drilling in concrete with drill stand.
11. Wet drilling in concrete with hand-held.
12. Test core.





## **CONCRETE CUTTING BY USING A WALL SAW:**

### **General Information:**

- i. Cutting into reinforced concrete up to 500 mm thickness.
- ii. Beaches & openings for window and doors
- iii. Horizontal, vertical and inclined cutting.

### **Field of applications:**

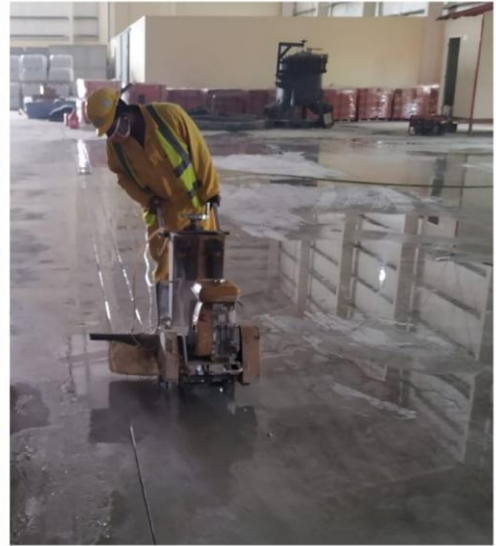
- 1. Cutout and breaches for doors, windows shafts and piles.
- 2. Controlled demolition and renovation
- 3. Wall sawing.



## **CONCRETE CUTTING BY USING A FLOOR SAW:**

### **General Information:**

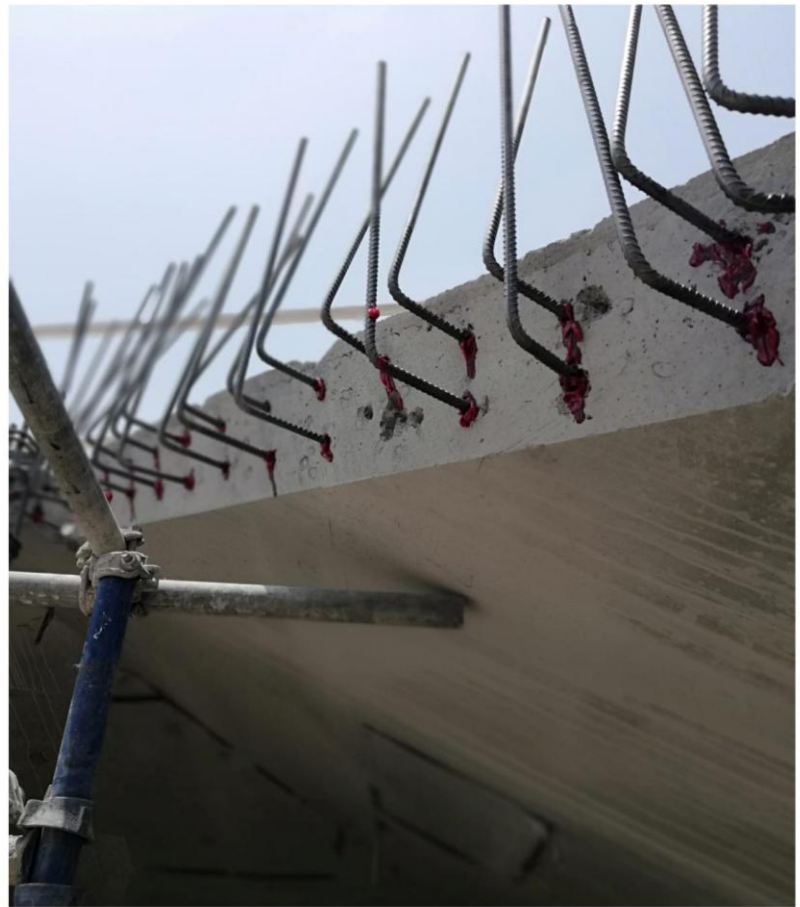
- I. Cutting concrete and asphalt by using floor saw up to 500mm thickness.
- II. Cutting for the expansion joints.



## **REBAR, CHEMICAL AND MECHANICAL ANCHOR FIXING:**

### ***General Information:***

- I. Fixing all types of anchors as per HILTI specification.





## **GPR scanning:**

### ***General Information:***

“For posttension & rebar”

Ground penetrating radar (GPR) is a non-destructive detection and imaging method which can be used to identify subsurface elements either underground or within a surface such as concrete.





## Quality Policy

***Aseel construction** is committed to ensure accurate and timely services and to continuously meet or exceed the stated or implied expectations of our clients by:*

- I. Providing accurate, timely delivery of our services to our customers.
- II. Managing our business by meeting the needs of our customers.
- III. Personnel familiarize themselves with quality documentation and implement the policies and procedures in their work.
- IV. Maintaining a mode of continuous improvement by way of employing qualified personnel.
- V. addition of new equipment, enhancing skills of personnel through training/ refresher courses etc.

The goal behind these procedures is to direct the staff of **Aseel Constructions** with regard to their required duties, and to provide sufficient assurance that the work undertaken by **Aseel Constructions** shall achieve fitness for purposes in every service, by planned and systematic methods that determine, assess and achieve quality.

The top management and employees of Aseel construction Company are strongly committed to ensure compliance to **Aseel Constructions** policy.



OUR VISION

OUR MISSION

OUR VALUES



## **OUR VISION:**

**Be a unique company in concrete coring and cutting, providing latest technology with high qualified team.**

## **OUR MISSION:**

**To provide reliable, timely, accurate, cost effective and quality specialized engineering services that meet customer's expectations.**

## **OUR Values:**

- **Commitment to customer satisfaction.**
- **Commitment to employee satisfaction.**
- **Professional integrity.**
- **Pride in organization.**
- **Contribution to the well-being of the society.**
- **Contribution to the preservation of the environment.**





# Health, Safety, & Environmental Policy

## Safety Policy Goals

***Aseel constructions employees' safety, health, and environment are the first priorities***

**C**onsider and apply a safe and healthy work environment.

**C**onsidering Aseel construction goal and future target aim.



# SAFETY POLICY

**ASEEL CONSTRUCTION** is committed to managing health, safety and environmental (HS&E) matters as an integral part of our business. It is our policy to assure the HS&E integrity of our processes and facilities at all times and at all places.

We will comply with all applicable laws and regulations and will implement programs and procedures to assure compliance. Strict compliance with HS&E standards will be a key ingredient in the training, performance reviews and incentives of all employees.

Where existing laws and regulations are not adequate to assure protection of human health, safety and the environment, we will establish and meet our own HS&E quality standards.

We will employ management systems and procedures specifically designed to prevent activities and/or conditions that pose a threat to human health, safety or the environment. We will minimize risk and protect our employees and the communities in which we operate by employing safe technologies and operating procedures, as well as being prepared for emergencies.

We will strive to prevent releases to the atmosphere, land or water. We will ensure the safe treatment and disposal of waste.

We will communicate our commitment to HS&E quality to our employees, clients and contractors.

We will solicit their input in meeting our HS&E goals and in turn will offer assistance to meet their goals.

We will continuously seek opportunities to improve our adherence to these principles, and will periodically report progress to our contractors and consultants.

We will consider environmental factors and the full acquisition, use, and disposal costs when making planning, purchasing, and operating decisions.

No	Contractor	Project	Application	Country
1	Sak holding	All projects	Concrete coring, cutting grinding	QATAR
2	Drake & scull	Lusail tower	Concrete coring,	QATAR
3	Shannon engineering	All projects	Concrete coring, cutting & Rebar fixing	QATAR
4	ICT	All projects	Concrete coring, cutting, drilling , GPR scanning	QATAR
5	Jefferson	Lusail & old salata towers	Concrete coring, cutting, drilling	QATAR
6	Boom general	All projects	Concrete coring, Carbston coring	QATAR
7	HABTOOR LIGHTON GROUP	North gate mall	Concrete coring,	QATAR
8	FBA	All projects	Concrete coring,	QATAR
9	Interprogetti	Qatar mall	Concrete coring, GPR scanning	QATAR
10	Derwind	City center mall	Concrete coring, GPR scanning	QATAR
11	CCC	Thumama project	Concrete coring, GPR scanning	QATAR
12	Man enterprise	Lusail	Concrete coring	QATAR
13	Eagle	Lusail	Concrete coring	QATAR
14	Asia steel	Alsad	Concrete coring	QATAR
15	Gulf falcon	Lusail	Concrete coring, cutting grinding	QATAR
16	Redco	Oasis	Concrete coring	QATAR

No	Contractor	Project	Application	Country
17	Arcon	Lusail	Concrete coring, cutting & Rebar fixing	QATAR
18	Sofcon	Mamora building	Concrete cutting	QATAR
19	Hambton	Um selal	Concrete coring	QATAR
20	MGC	Khalifa compound	Concrete cutting	QATAR
21	Sapco	Industrial area	Concrete coring	QATAR
22	HassanESCO	Milaha	Concrete coring, cutting & Rebar fixing	QATAR
23	Safwa	Nejma building	Concrete coring	QATAR
24	Power steel	Um selal ali	Concrete coring	QATAR
25	UCC	Lusail	Concrete coring	QATAR
26	Al twafuq	Wakra	Concrete coring	QATAR
27	Al wifaq	Lusail	Concrete coring	QATAR
28	Marina	Lusail	Concrete coring	QATAR
29	Al huda	Supreme education council	Concrete coring	QATAR
30	QDVC	Lusail	Concrete coring	QATAR
31	Alstom	Lusail	Concrete coring, cutting & Rebar fixing	QATAR
32	Horizon	Al Jazeera tower	Concrete cutting	QATAR





# OUR SUCCESS BUILT THROUGH TEAM WORK



## Contact us:

Mob : [+97470661660](tel:+97470661660) - [+97450776363](tel:+97450776363) - [+97450666101](tel:+97450666101)

Email: [info@smartcutqa.com](mailto:info@smartcutqa.com)

Website: [Aseelconstructions.com](http://Aseelconstructions.com)

P.O Box: 80948

